

## Easter Hymn (410)

Melody and bass from 'Lyra Davidca' 1708. Arrangement © Douglas Galbraith

Melody (8ve)



Melody



Melody (Bb)



Melody (Vla)



Melody (Eb)



Alto



Alto (Bb)



Alto (Eb)



Tenor



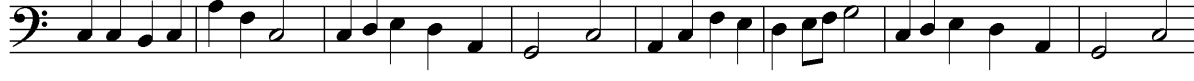
Tenor (Bb)



Horn (F)



Bass



Simple Bass



Simple Part



Simple Part (Bb)



This image displays a page of musical notation consisting of 14 staves. The notation is organized into several systems:

- System 1 (Staves 1-4):** Features a treble clef on the first staff, a treble clef on the second, a treble clef with a key signature change to two sharps (F# and C#) on the third, and a bass clef on the fourth.
- System 2 (Staves 5-8):** Features a treble clef with a key signature change to two sharps on the fifth, a treble clef with a key signature change to two sharps on the sixth, a treble clef with a key signature change to two sharps on the seventh, and a bass clef on the eighth.
- System 3 (Staves 9-10):** Features a treble clef with a key signature change to one sharp (F#) on the ninth, and a bass clef on the tenth.
- System 4 (Staves 11-12):** Features a treble clef with a key signature change to one sharp on the eleventh, and a bass clef on the twelfth.
- System 5 (Staves 13-14):** Features a treble clef on the thirteenth and a treble clef with a key signature change to two sharps on the fourteenth.

The notation includes various note values such as eighth, quarter, and half notes, as well as rests and bar lines. The key signature changes from one sharp (F#) to two sharps (F# and C#) in the third staff, and then back to one sharp (F#) in the ninth staff.