

See Saw Saccara Down (366)

English Folk melody. Arrangement © Douglas Galbraith

Melody



Melody (Bb)



Melody (Vla)



Melody (A)



Alto



Alto (Bb)



Alto (Eb)



Tenor



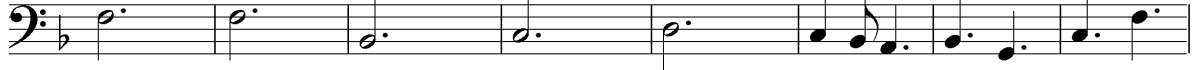
Tenor (Bb)



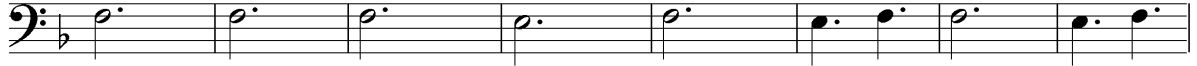
Horn (F)



Bass



Simple Bass



Simple Part



Simple Part (Bb)



This image displays a page of musical notation consisting of 14 staves, arranged in seven systems of two staves each. The notation includes treble and bass clefs, various key signatures (one flat, one sharp, two flats, two sharps), and a variety of note values and rests. The music is organized into systems of two staves each. The first system (staves 1-2) features a treble clef with a one-flat key signature and a bass clef with a one-sharp key signature. The second system (staves 3-4) features a bass clef with a one-flat key signature and a treble clef with a two-flat key signature. The third system (staves 5-6) features a treble clef with a one-flat key signature and a treble clef with a one-sharp key signature. The fourth system (staves 7-8) features a treble clef with a two-sharp key signature and a bass clef with a one-flat key signature. The fifth system (staves 9-10) features a bass clef with a one-flat key signature and a bass clef with a one-sharp key signature. The sixth system (staves 11-12) features a treble clef with a one-flat key signature and a bass clef with a one-flat key signature. The seventh system (staves 13-14) features a treble clef with a one-flat key signature and a treble clef with a one-sharp key signature. The notation includes various note values (quarter, eighth, sixteenth, and dotted notes), rests, and dynamic markings.